

## Stratford-on-Avon District Council

## Ecological and Geological Study of Local Service Villages

## Settlement Assessment: Long Marston

## Designated sites:

Status and Name	Area	Grid	Description
<b>LWS potential sites</b>			
SP14P1 Church Meadow	0.49	SP1524	Semi-natural grasslands & marsh
SP14P4 Long Marston Meadow	0.43	SP1504	Semi-natural grasslands & marsh
SP14P3 North End Orchard, Long	1.21	SP1544	Woodland & scrub
<b>Deferred</b>			
SP14N1 Long Marston Camp	171.21	SP1547	Post-industrial sites

## Key Target Notes

- SP14p16 Disused railway line
- SP14p18 SP14p18 Long Marston meadow semi-improved grassland
- SP14p5 North End Orchard
- SP14n15 Semi-improved grassland site alongside Long Marston Camp

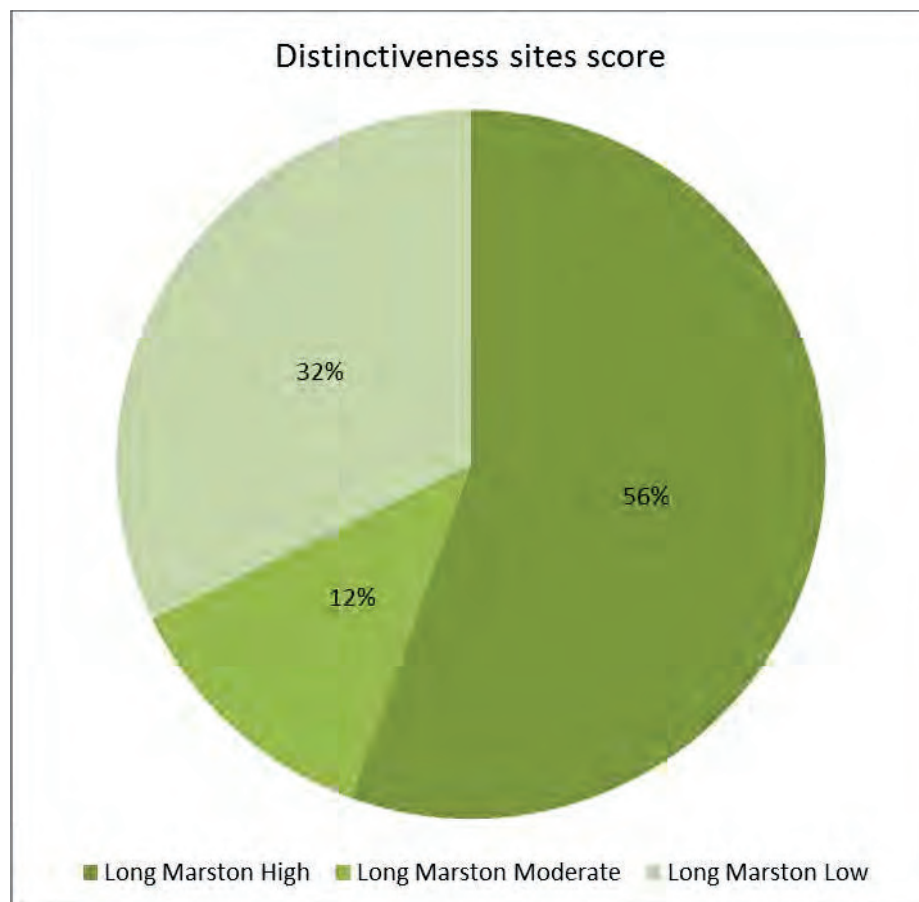
## Habitat Description

The habitats with high distinctiveness including semi-natural woodland, semi-improved grassland and standing water are scattered through the study area, The only exception is the disused railway line which has continuous extent of semi-improved grassland, scrub and linear trees.

To the south east the boundary cuts through the Long Marston Camp mixed habitat site with a mix of semi-improved and amenity grassland.

Distinctiveness Phase 1 habitats	No. of sites	Area in hectares	Score
<b>High</b>			
A111 Broad-leaved semi-natural woodland	15	2.40	45
A5 Orchard (commercial)	2	1.89	6
B22 Semi-improved neutral	9	4.77	27

grassland			
G1 Standing water	13	0.49	39
G2 Running water	3	0.13	9
<b>Sub Total</b>	<b>42</b>	<b>9.67</b>	<b>126</b>
<b>Moderate</b>			
A112 Broad-leaved plantation	3	0.68	6
A21 Dense/continuous scrub	1	0.17	2
B6 Semi-improved neutral grassland	10	4.74	20
<b>Sub Total</b>	<b>14</b>	<b>5.59</b>	<b>28</b>
<b>Low</b>			
A122 Coniferous plantation	1	0.38	1
A132 Mixed plantation	1	1.16	1
B4 Improved grassland	39	128.98	39
C31 Tall ruderal	2	0.34	4
J11 Arable	14	73.05	14
J12 Amenity grassland	15	8.34	30
J4 Bare ground	1	0.17	1
<b>Sub Total</b>	<b>73</b>	<b>212.42</b>	<b>90</b>
<b>Totals</b>	<b>129</b>	<b>227.68</b>	<b>244</b>



## **Geological Description**

Long Marston has considerable potential for its early Jurassic geology (Charmouth Mudstone Formation), with potential for palaeontological discoveries. Any excavations into natural geology would be of potential interest for purposes of recording and/or museum collecting.

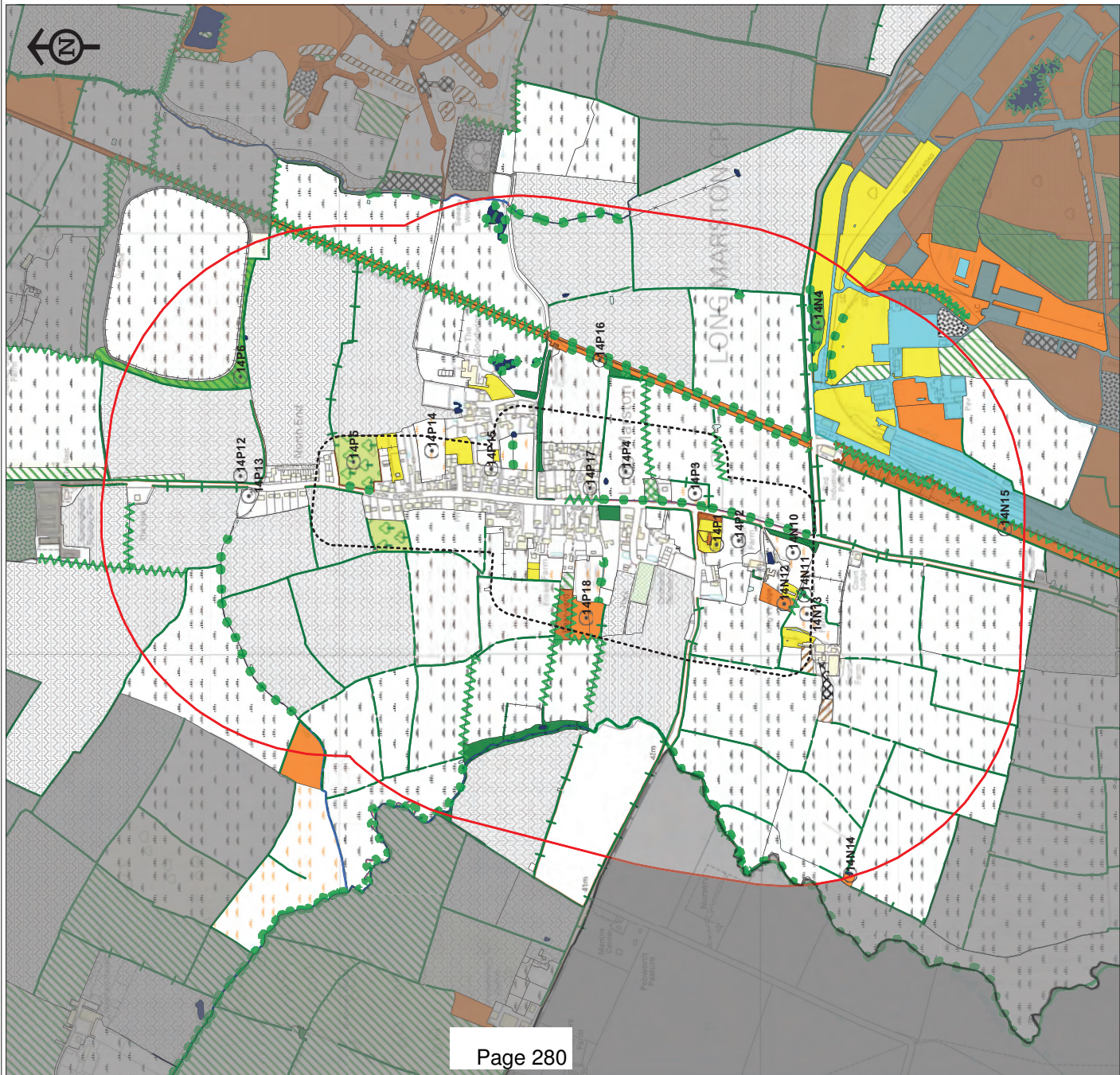
## **Protected Species**

Grass snake and an indeterminable bats species have been recorded in the settlement area. In the wider area there are records for water vole, great crested newt, badger, and brown hare with additional butterfly records of small heath and grizzled skipper and bat records of brown long-eared, common and soprano pipestrelle species.

## **Recommendations for Further Survey**

- Long Marston Camp site

# LONG MARSTON



## PHASE 1 HABITAT SURVEY

	A111 (Broad-leaved semi-natural woodland)		C32 (Non-ruderal)
	A112 (Broad-leaved plantation)		D5 (Dry heath/acid grassland mosaic)
	A121 (Coniferous semi-natural woodland)		E11 (Sphagnum Bog)
	A122 (Coniferous plantation)		E21 (Acid/neutral flush)
	A131 (Mixed semi-natural woodland)		E31 (Valley mire)
	A132 (Mixed plantation)		E32 (Basin mire)
	A21 (Dense/continuous scrub)		F1 (Swamp)
	A22 (Scattered scrub)		F22 (Inundation vegetation)
	A31 (Broad-leaved parkland/scattered trees)		G1 (Standing water)
	A32 (Coniferous parkland/scattered trees)		G2 (Running water)
	A4 (Recently felled woodland)		I21 (Quarry)
	A5 (Orchard)		I22 (Spoil)
	B11 (Unimproved acidic grassland)		I23 (Mine)
	B12 (Semi-improved acidic grassland)		I24 (Refuse tip)
	B21 (Unimproved neutral grassland)		J11 (Arable)
	B22 (Semi-improved neutral grassland)		J112 (Allotments)
	B31 (Unimproved calcareous grassland)		J113 (Set-aside)
	B32 (Semi-improved calcareous grassland)		J12 (Amenity grassland)
	B4 (Improved grassland)		J13 (Ephemeral/short perennial)
	B5 (Marsh/marshy grassland)		J14 (Introduced shrub)
	B6 (Poor semi-improved grassland)		J36 (Buildings)
	C11 (Continuous bracken)		J4 (Bare ground)
	C31 (Tall ruderal)		

## LINEAR FEATURES

	A21 (Linear Scrub)		J23 (Hedge with Trees)
	A3 (Linear Trees)		J231 (Native Species Rich Hedge with Trees)
	G1 (Standing Water)		J24 (Fence)
	G2 (Running Water)		J25 (Wall)
	I1 (Inland Cliff)		J26 (Dry Ditch)
	J21 (Intact Hedge)		J27 (Boundary Removed)
	J211 (Native Species Rich Intact Hedge)		J28 (Earth Bank)
	J22 (Defunct Hedge)		

## SETTLEMENT DISTINCTIVENESS

	3: HIGH		HIGH: 2,000,000 to 20,000,000
	2: MODERATE		500,000 to 2,000,000
	1: LOW		100,000 to 500,000
			50,000 to 100,000
			LOW: 1 to 50,000
			NO CONNECTIVITY: 0

## LOCAL WILDLIFE SITES

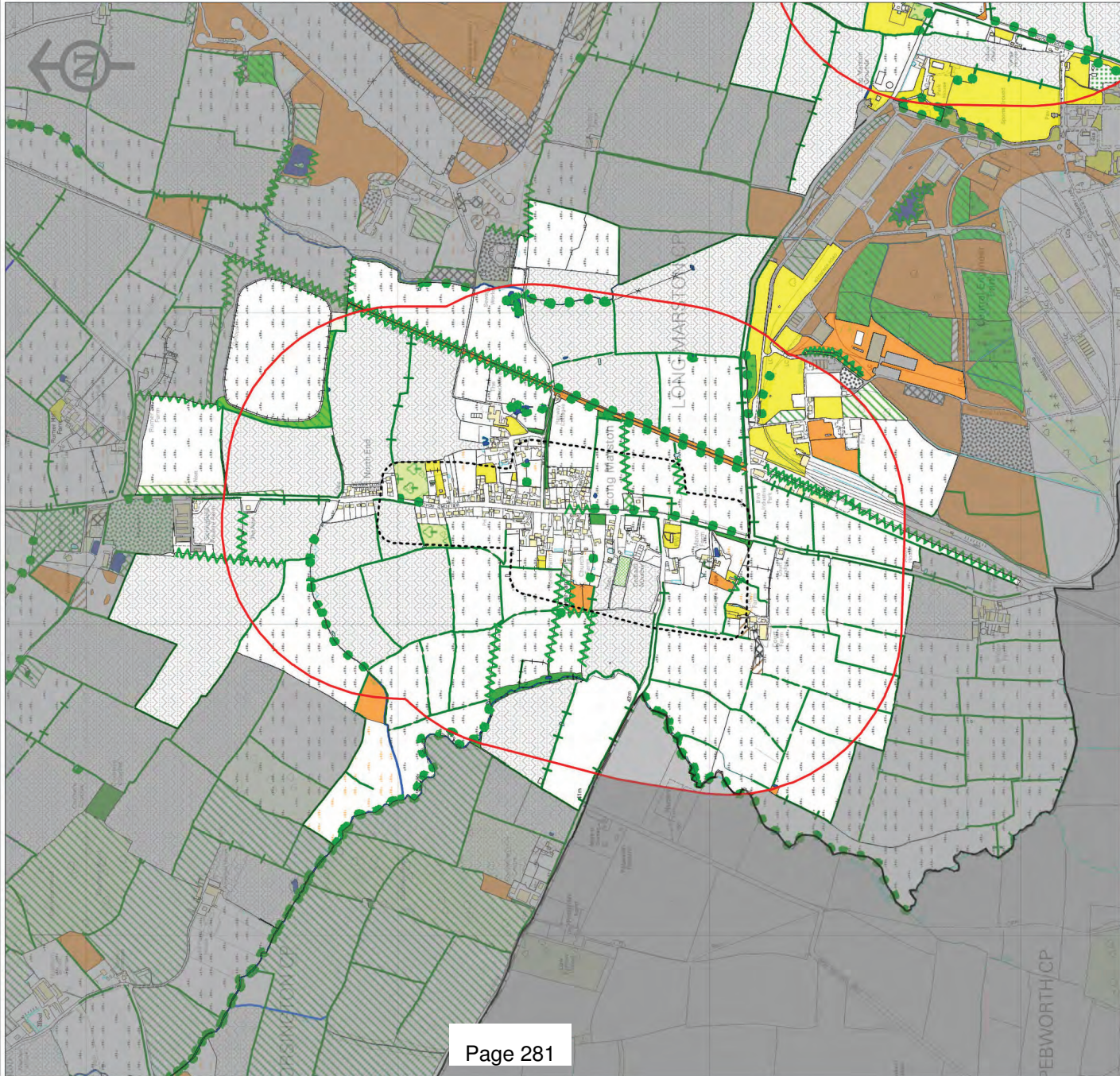
	DEFERRED SITE		LOCAL WILDLIFE SITE
	LOCAL WILDLIFE SITE		POTENTIAL LOCAL WILDLIFE SITE
	SSSI		ANCIENT WOODLAND
	LOCAL NATURE RESERVE		LOCAL GEOLOGICAL SITE
	WWT RESERVE		

## STUDY AREA

	500m buffer		OS DEVELOPED LAND USE AREA
	Settlements		TARGET NOTE
			Target Note Point

© Crown Copyright and database right 2012. Ordnance Survey 100019520. Copyright of the data remains the property of the Ordnance Survey. While every effort has been made to ensure that the data is accurate in accordance with Phase 1 habitat survey standards the project cannot guarantee its accuracy or accept responsibility for any changes to land use or habitat that may have occurred since the survey was undertaken.

LONG MARSTON



PHASE 1 HABITAT SURVEY

- Habitat Types
- A111 (Broad-leaved semi-natural woodland)
  - A112 (Broad-leaved plantation)
  - A121 (Coniferous semi-natural woodland)
  - A122 (Coniferous plantation)
  - A131 (Mixed semi-natural woodland)
  - A132 (Mixed plantation)
  - A21 (Dense/continuous scrub)
  - A22 (Scattered scrub)
  - A31 (Broad-leaved parkland/scattered trees)
  - A32 (Coniferous parkland/scattered trees)
  - A4 (Recently felled woodland)
  - A5 (Orchard)
  - B11 (Unimproved acidic grassland)
  - B12 (Semi-improved acidic grassland)
  - B21 (Unimproved neutral grassland)
  - B22 (Semi-improved neutral grassland)
  - B31 (Unimproved calcareous grassland)
  - B32 (Semi-improved calcareous grassland)
  - B4 (Improved grassland)
  - B5 (Marsh/marshy grassland)
  - B6 (Poor semi-improved grassland)
  - C11 (Continuous track/en)
  - C31 (Tall ruderal)

- C32 (Non-ruderal)
- D5 (Dry heath/acid grassland mosaic)
- E11 (Sphagnum Bog)
- E21 (Acid/neutral flush)
- E31 (Valley mire)
- E32 (Basin mire)
- F1 (Swamp)
- F22 (Inundation vegetation)
- G1 (Standing water)
- G2 (Running water)
- I21 (Quarry)
- I22 (Spill)
- I23 (Mine)
- I24 (Refuse tip)
- J11 (Arable)
- J112 (Allotments)
- J113 (Set-aside)
- J12 (Amenity grassland)
- J13 (Ephemeral/short perennial)
- J14 (Introduced shrub)
- J36 (Buildings)
- J4 (Bare ground)

- Linear Features
- A21 (Linear Scrub)
  - A3 (Linear Trees)
  - G1 (Standing Water)
  - G2 (Running Water)
  - I1 (Inland Cliff)
  - J21 (Intact Hedge)
  - J211 (Native Species Rich Intact Hedge)
  - J22 (Defunct Hedge)
  - J23 (Hedge with Trees)
  - J231 (Native Species Rich Hedge with Trees)
  - J24 (Fence)
  - J25 (Wall)
  - J26 (Dry Ditch)
  - J27 (Boundary Removed)
  - J28 (Earth Bank)

- STUDY AREA
- 500m buffer
  - Settlements



# Stratford-on-Avon District Council Ecological Villages Study

## Target Notes

### Long Marston

sp14n10	Poor semi-improved grassland dominated by <i>Holcus lanatus</i> and <i>Arrhenatherum elatius</i> with <i>Dactylis glomerata</i> ; <i>Poa trivialis</i> and few forbs.
sp14n11	Small pond with occasional <i>Carex otrubae</i> around the edges. Aquatic vegetation duckweed; blanket weed and water plantain.
sp14n12	Pine plantation with little understorey or ground flora.
sp14n13	Poor semi-improved horse grazed pasture with <i>Alopecurus pratensis</i> ; <i>Dactylis glomerata</i> ; <i>Poa</i> spp.; <i>Agrostis tenuis</i> and scattered nettle; cow parsley and creeping thistle.
sp14n14	Small eutrophic pond surrounded by hawthorn scrub; ash and willow and a small area of rough grassland with pheasant release pens.
sp14n15	Mosaic of coarse grasses such as <i>Dactylis glomerata</i> ; <i>Holcus lanatus</i> and <i>Arrhenatherum elatius</i> with tall herbs ( nettle; thistle; white campion and blackthorn; hawthorn and dog rose scrub. UPDATED 22/05/2012 OP. No access.
sp14n4	Pine plantation with little understorey or ground flora.
sp14p1	Churchyard. Amenity grassland but quite rich; with <i>Poa</i> spp.; <i>Holcus lanatus</i> ; <i>Dactylis glomerata</i> ; <i>Festuca rubra</i> and occasional <i>Arrhenatherum elatius</i> . Forbs include frequent creeping cinquefoil; ribwort plantain; creeping buttercup; cut-leaved crane's-bill; red clover; selfheal and occasional cowslip; germander speedwell; bulbous buttercup; hoary plantain; black medick; lady's bedstraw and meadow vetchling.
sp14p12	Overgrown allotments with abundant <i>Dactylis glomerata</i> ; <i>Arrhenatherum elatius</i> and <i>Holcus lanatus</i> ; black medick and beaked hawks-beard. There are areas of rosebay willowherb; spear thistle; wall lettuce and parsnip.
sp14p13	A small area of willow and hawthorn scrub with raspberry; hemlock and cow parsley. UPDATED 22/05/2012 OP. Now improved grassland.
sp14p14	Unmanaged grassland with frequent <i>Dactylis glomerata</i> ; <i>Arrhenatherum elatius</i> ; <i>Holcus lanatus</i> ; <i>Alopecurus pratensis</i> and <i>Poa</i> spp. and occasional <i>Festuca rubra</i> and <i>Phleum pratense</i> . Forbs are sparse but include creeping buttercup; black medick and occasional dock.
sp14p15	Unmanaged grassland with frequent <i>Dactylis glomerata</i> ; <i>Arrhenatherum elatius</i> ; <i>Holcus lanatus</i> ; <i>Alopecurus pratensis</i> and <i>Poa</i> spp. and occasional <i>Festuca rubra</i> and <i>Phleum pratense</i> . Forbs include creeping buttercup; black medick; red clover; cut-leaved crane's-bill and occasional sorrel and black knapweed. UPDATED 22/05/2012 OP. Destroyed by housing development.
sp14p16	Dismantled railway now used as cycle way and footpath; lined by hawthorn; blackthorn and elder scrub with <i>Dactylis glomerata</i> ; <i>Arrhenatherum elatius</i> and patchy nettle either side of the gravelled path. There are areas of white campion; cow parsley and hemlock. UPDATED 22/05/2012 OP. As described with common vetch, cowslips, germander speedwell, black medick, cut leaved cranesbill, bulbous buttercup, creeping cinquefoil.
sp14p17	Semi-improved pasture with evidence of horse grazing. Dominated by coarse grasses such as <i>Dactylis glomerata</i> ; <i>Arrhenatherum elatius</i> and <i>Holcus lanatus</i> with occasional <i>Poa pratensis</i> ; <i>Alopecurus pratensis</i> and <i>Bromus mollis</i> . Forbs are sparse but include creeping buttercup; common vetch and cut-leaved crane's-bill. UPDATED 22/05/2012 OP. destroyed by housing development.
SP14P18	Semi improved neutral grassland with meadow buttercup, creeping cinquefoil, cuckooflower, hedge bedstraw and bird's foot trefoil.



## Target Notes

sp14p2	Poor semi-improved meadow with frequent <i>Poa</i> spp.; <i>Dactylis glomerata</i> ; <i>Holcus lanatus</i> ; <i>Arrhenatherum elatius</i> ; <i>Cynosurus cristatus</i> and <i>Alopecurus pratensis</i> . and occasional <i>Lolium perenne</i> ; <i>Anthoxanthum odoratum</i> and <i>Festuca rubra</i> . Forbs are sparse and are limited to creeping buttercup; black medick and sorrel.
sp14p3	Poor semi-improved pasture with a number of old pollarded willows over frequent <i>Alopecurus pratensis</i> ; <i>Cynosurus cristatus</i> ; <i>Poa pratensis</i> ; <i>Dactylis glomerata</i> and occasional <i>Festuca rubra</i> ; <i>Arrhenatherum elatius</i> and <i>Holcus lanatus</i> . There are patchy creeping thistle; nettle; creeping buttercup and sorrel.
sp14p4	Poor horse grazed semi-improved pasture with <i>Alopecurus pratensis</i> ; <i>Cynosurus cristatus</i> ; <i>Poa pratensis</i> and occasional <i>Dactylis glomerata</i> .
sp14p5	Old orchard over rank grasses such as <i>Dactylis glomerata</i> and <i>Arrhenatherum elatius</i> with only occasional creeping buttercup; patches of nettle and cow parsley and the odd teasel.
sp14p6	Very young plantation of oak; beech and ash over <i>Poa pratensis</i> ; <i>Holcus lanatus</i> ; <i>Dactylis glomerata</i> and occasional <i>Agrostis tenuis</i> . Hare; many common blue and small copper butterflies seen. The adjacent improved hay meadow had good numbers of skylark.





LONG MARSTON

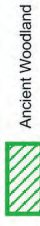


SITES OF SPECIAL SCIENTIFIC INTEREST



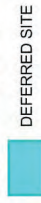
SSSI

ANCIENT WOODLAND

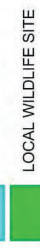


Ancient Woodland

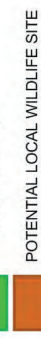
LOCAL WILDLIFE SITES



DEFERRED SITE



LOCAL WILDLIFE SITE



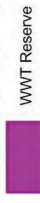
POTENTIAL LOCAL WILDLIFE SITE

LOCAL NATURE RESERVE



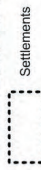
LNR

WARWICKSHIRE WILDLIFE TRUST RESERVES



WWT Reserve

OS DEVELOPED LAND USE AREA



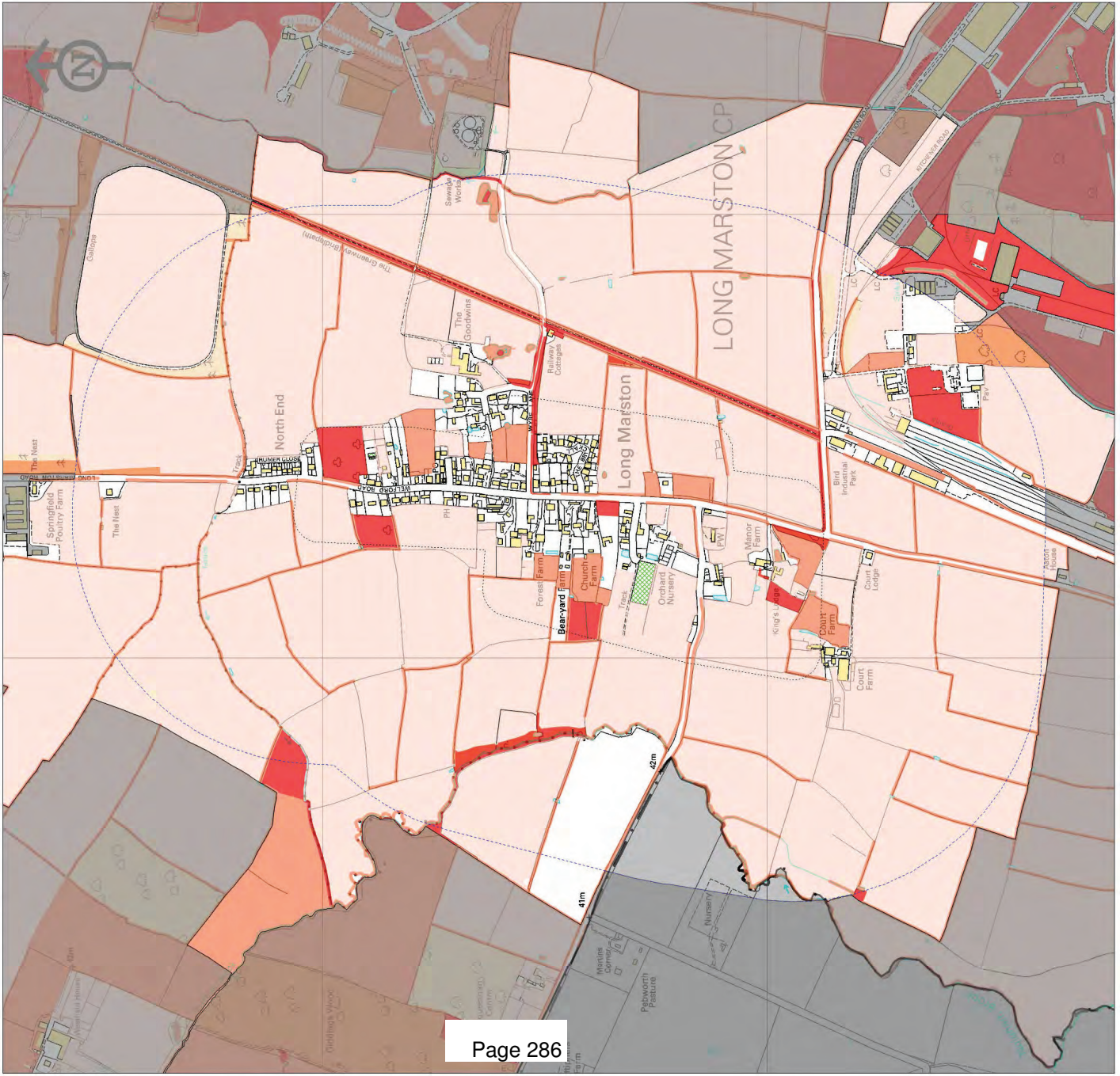
Settlements

STUDY AREA



500m buffer

# LONG MARSTON



### Settlement Distinctiveness

- 3: HIGH
- 2: MODERATE
- 1: LOW

### OS DEVELOPED LAND USE AREA

- STUDY AREA
- 500m buffer
- Settlements

© Crown copyright, 2012. All rights reserved. Licence No. 100019520. Copyright of the data remains the property of the Habitat Biodiversity Audit for Warwickshire, Coventry and Solihull. While every effort has been made to ensure that the data is accurate in accordance with Phase 1 habitat survey standards, the project cannot guarantee its accuracy or accept any liability for any changes to land use or habitat that may have occurred since the survey was undertaken.

# LONG MARSTON



## Species

Buffer zone for water vole or white-clawed crayfish



Buffer zone for protected amphibians and reptiles



Buffer zone for bat



Black Poplar



Veteran tree



County rare plant



Warwickshire Biological Records Centre

STUDY AREA



OS DEVELOPED LAND USE AREA



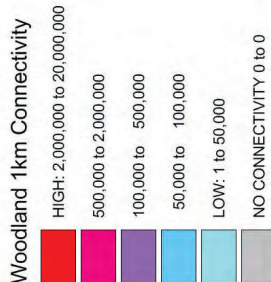
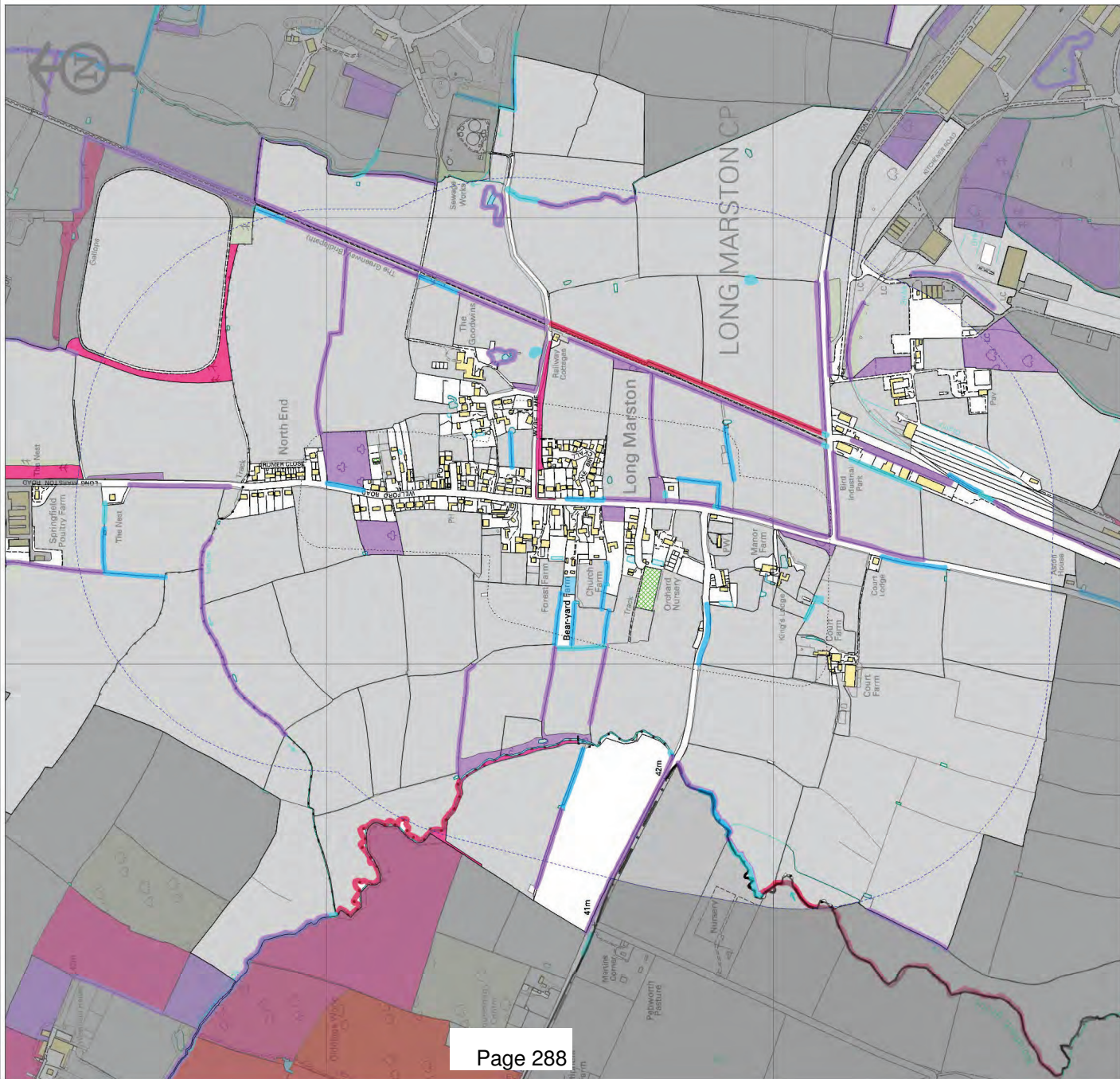
500m buffer



Settlements

© Crown Copyright and database right 2012. Ordnance Survey 100019520. Copyright of the data remains the property of the Ordnance Survey. The data is provided as a service and the Ordnance Survey does not accept any liability for the accuracy or accept responsibility for any changes to land use or habitat that may have occurred since the survey was undertaken.

# LONG MARSTON



© Crown copyright, 2012. All rights reserved. Licence No. 100019520. Copyright of the data remains the property of the Habitat Biodiversity Audit for Warwickshire, Coventry and Solihull. While every effort has been made to ensure that the data is accurate in accordance with Phase 1 habitat survey standards the project cannot guarantee its accuracy or accept any liability for any changes to land use or habitat that may have occurred since the survey was undertaken.